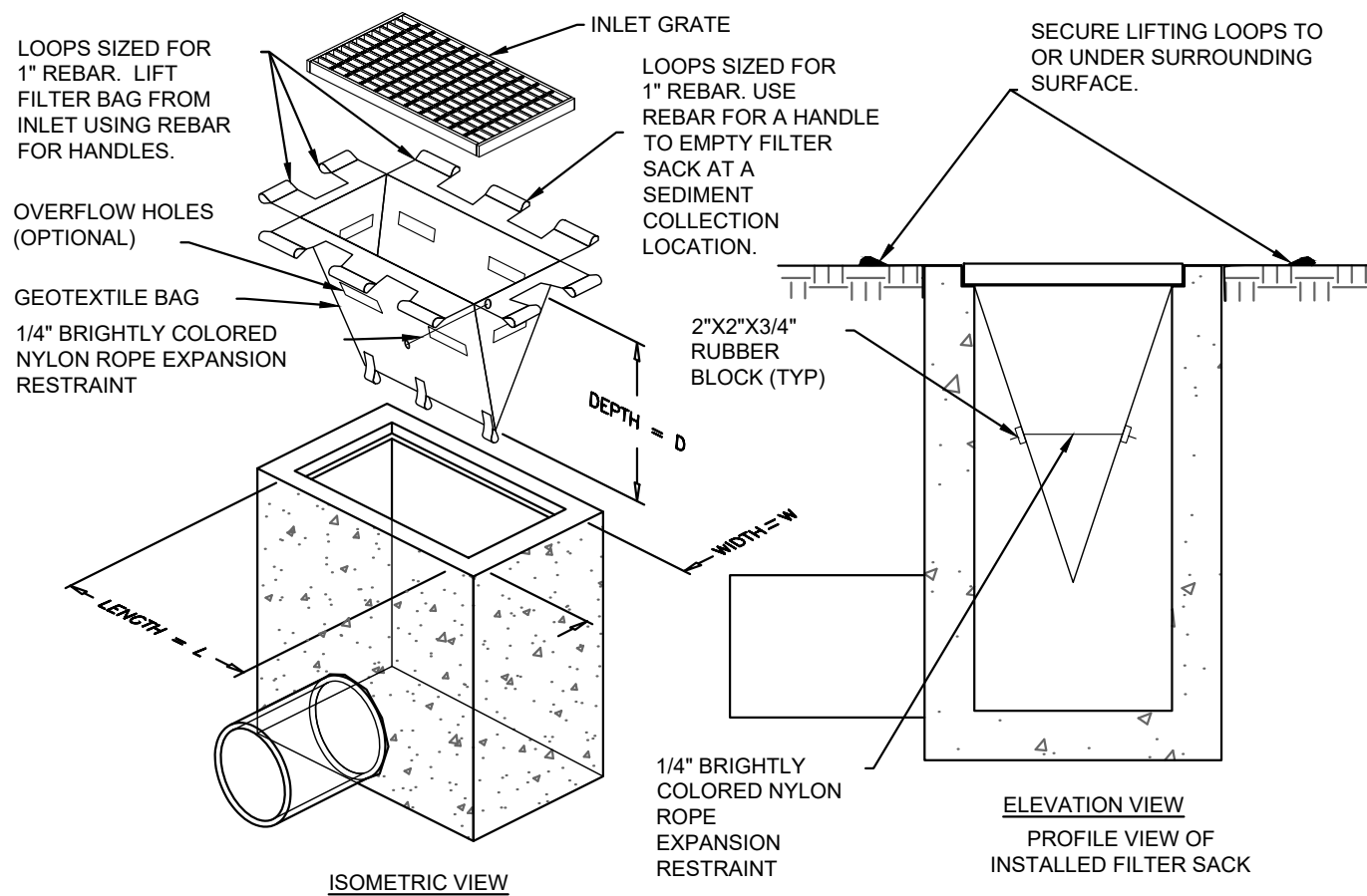


Set Mill Creek Pompano Layout (C-101) Demolition & Erosion Control Details February 10, 2025 08:57:40pm K:\Horn\043175014.mill creek pompano\Design\CADD\plansheets\CEROS-DET.dwg
This drawing is the property of Kimley-Horn and Associates, Inc. and is not to be reproduced, stored in a retrieval system, or transmitted in any form or by any means, electronic, mechanical, photocopying, recording, or by any information storage and retrieval system, without the prior written permission of Kimley-Horn and Associates, Inc. It is to be used only for the specific purpose and client for which it was prepared. Reuse of and improper reliance on this document without written authorization and adaptation by Kimley-Horn and Associates, Inc. shall be without liability to Kimley-Horn and Associates, Inc.

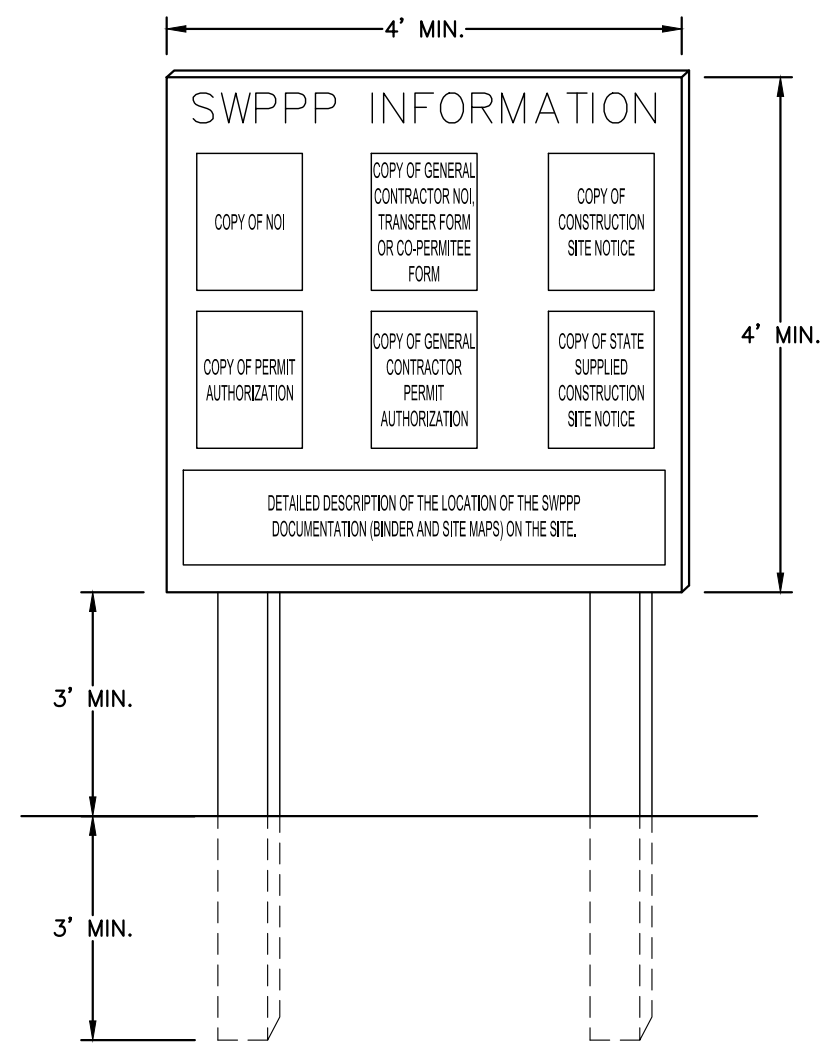


- EMPTY FILTER SACK WHEN BRIGHTLY COLORED EXPANSION RESTRAINT CAN NO LONGER BE SEEN.
- GEOTEXTILE WILL BE A WOVEN POLYPROPYLENE FABRIC THAT MEETS OR EXCEEDS REQUIREMENTS IN THE SPECIFICATIONS TABLE.
- AN OIL ADSORBENT PAD OR PILLOW CAN BE PURCHASED WHEN OIL SPILLS ARE A CONCERN.
- INSPECT PER REGULATORY REQUIREMENTS.
- THE WIDTH, "W", OF THE FILTER SACK WILL MATCH THE INSIDE WIDTH OF THE GRATED INLET BOX.
- THE DEPTH, "D", OF THE FILTER SACK WILL BE BETWEEN 18 INCHES AND 36 INCHES.
- THE LENGTH, "L", OF THE FILTER SACK WILL MATCH THE INSIDE LENGTH OF THE GRATED INLET BOX.

LOW TO MODERATE FLOW GEOTEXTILE FABRIC SPECIFICATION TABLE			
PROPERTIES	TEST METHOD	UNITS	
GRAB TENSILE STRENGTH	ASTM D-4632	300 LBS	
GRAB TENSILE ELONGATION	ASTM D-4632	20 %	
PUNCTURE	ASTM D-4633	120 LBS	
MULLEN BURST	ASTM D-3786	800 PSI	
TRAPEZOID TEAR	ASTM D-4533	120 LBS	
UV RESISTANCE	ASTM D-4355	80 %	
APPARENT OPENING SIZE	ASTM D-4751	40 US SIEVE	
FLOW RATE	ASTM D-4491	40 GAL/MIN/SQ FT	
PERMITTIVITY	ASTM D-4491	0.95 SEC -1	
MODERATE TO HIGH FLOW GEOTEXTILE FABRIC SPECIFICATION TABLE			
PROPERTIES	TEST METHOD	UNITS	
GRAB TENSILE STRENGTH	ASTM D-4632	265 LBS	
GRAB TENSILE ELONGATION	ASTM D-4632	20 %	
PUNCTURE	ASTM D-4633	135 LBS	
MULLEN BURST	ASTM D-3786	420 PSI	
TRAPEZOID TEAR	ASTM D-4533	45 LBS	
UV RESISTANCE	ASTM D-4355	90 %	
APPARENT OPENING SIZE	ASTM D-4751	20 US SIEVE	
FLOW RATE	ASTM D-4491	200 GAL/MIN/SQ FT	
PERMITTIVITY	ASTM D-4491	1.5 SEC -1	

FILTER SACK INLET PROTECTION
NOT TO SCALE

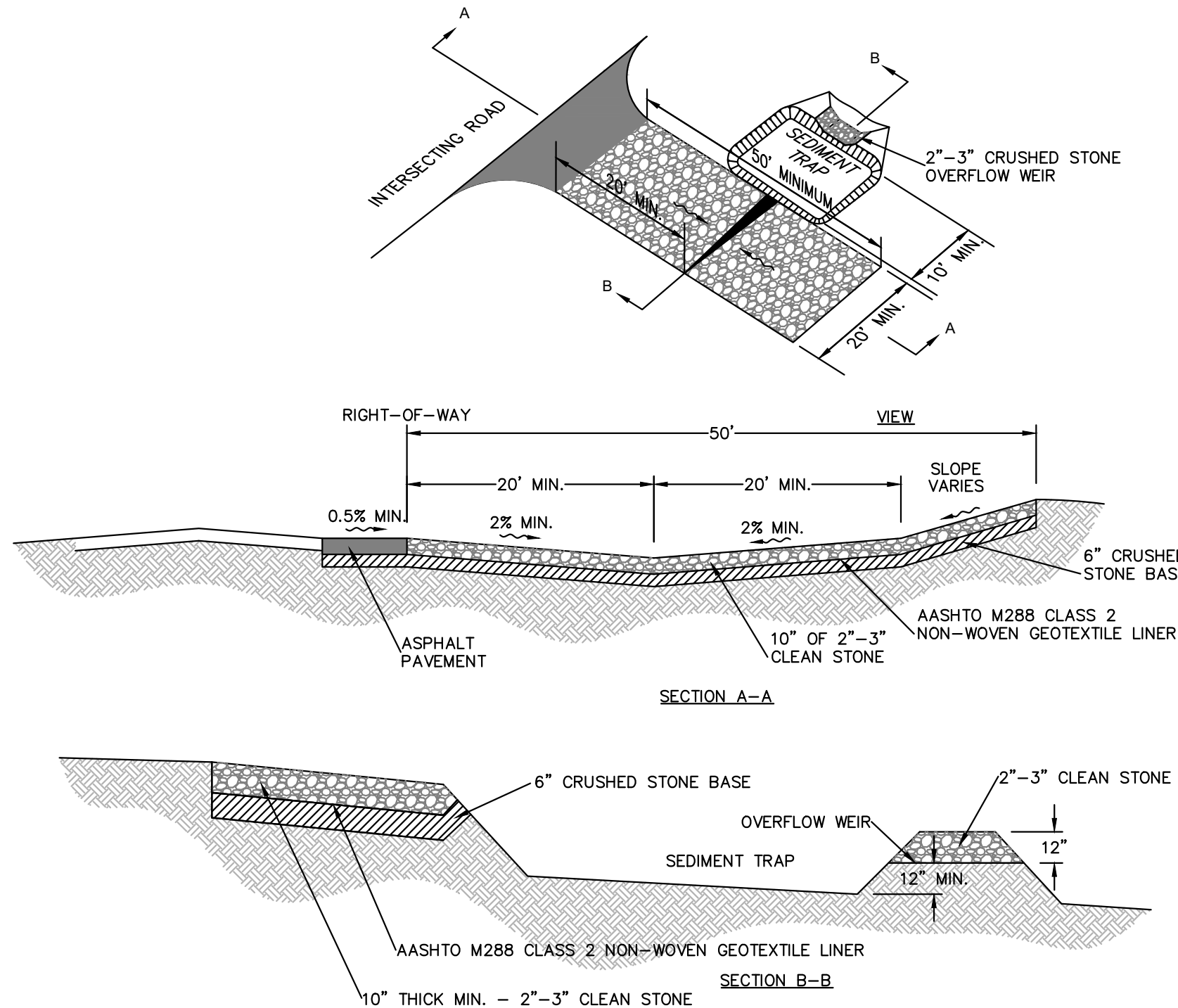
K-H



- NOTES:
- "SWPPP INFORMATION" MUST BE DISPLAYED PROMINENTLY ACROSS THE TOP OF THE SIGN, AS SHOWN IN THE DETAIL.
 - SIGN TO BE CONSTRUCTED OF A RIGID MATERIAL, SUCH AS PLYWOOD OR OUTDOOR SIGN BOARD. SIGN MUST BE CONSTRUCTED IN A MANNER TO PROTECT DOCUMENTS FROM DAMAGE DUE TO WEATHER (WIND, SUN, MOISTURE, ETC.).
 - THE SWPPP INFORMATION SIGN MUST BE LOCATED NEAR THE ENTRANCE/EXIT OF THE SITE, SUCH THAT IT IS ACCESSIBLE/VIEWABLE BY THE GENERAL PUBLIC, BUT NOT OBSTRUCTING VIEWS AS TO CAUSE A SAFETY HAZARD.
 - ALL POSTED DOCUMENTS MUST BE MAINTAINED IN A CLEARLY READABLE CONDITION AT ALL TIMES THROUGHOUT CONSTRUCTION AND UNTIL THE NOTICE-OF-TERMINATION (NOT) IS FILED FOR THE PERMIT.
 - CONTRACTOR SHALL POST OTHER STORM WATER AND/OR EROSION AND SEDIMENT CONTROL RELATED PERMITS ON THE SIGN AS REQUIRED BY THE LOCAL AGENCY.
 - SIGN SHALL BE LOCATED OUTSIDE OF PUBLIC RIGHT-OF-WAY AND EASEMENTS UNLESS APPROVED BY THE GOVERNING AGENCY.
 - CONTRACTOR IS RESPONSIBLE FOR ENSURING STABILITY OF THIS SWPPP INFORMATION SIGN.

SWPPP INFORMATION SIGN
NOT TO SCALE

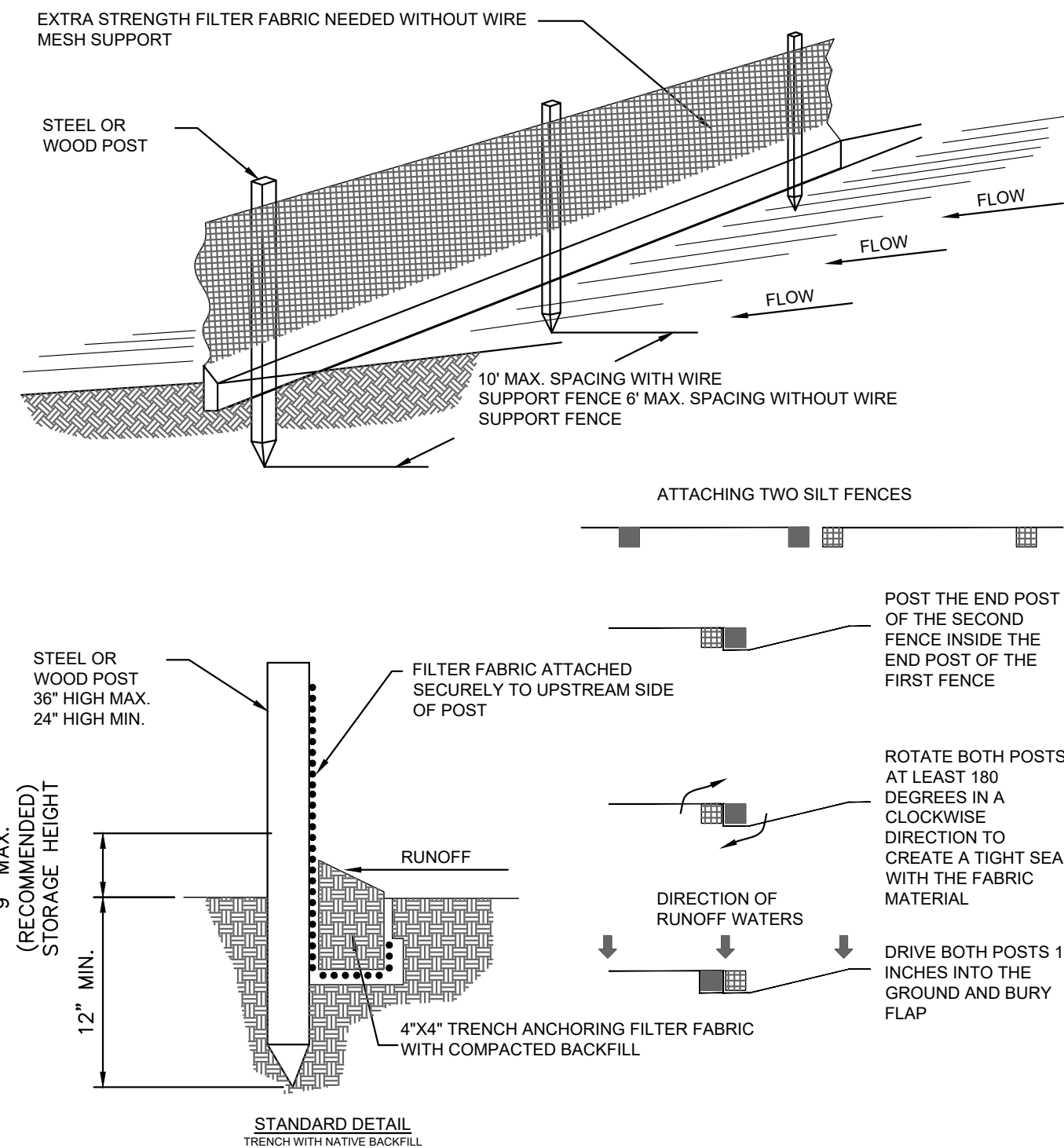
K-H



- NOTES:
- PROVIDE SEDIMENT TRAP ON DOWN GRADIENT SIDE (OR BOTH SIDES) AS REQUIRED.
 - FLUSH SURFACE STONE TOWARD SEDIMENT TRAP WITH HIGH VOLUME WATER FLOW AS NEEDED TO MAINTAIN CLEAN SURFACE STONE.
 - PLACEMENT OF SEDIMENT TRAP SHALL BE AT LEAST THE MINIMUM DISTANCE FROM THE RIGHT OF WAY AS REQUIRED BY LOCAL JURISDICTION.

CONSTRUCTION ENTRANCE
NOT TO SCALE

K-H



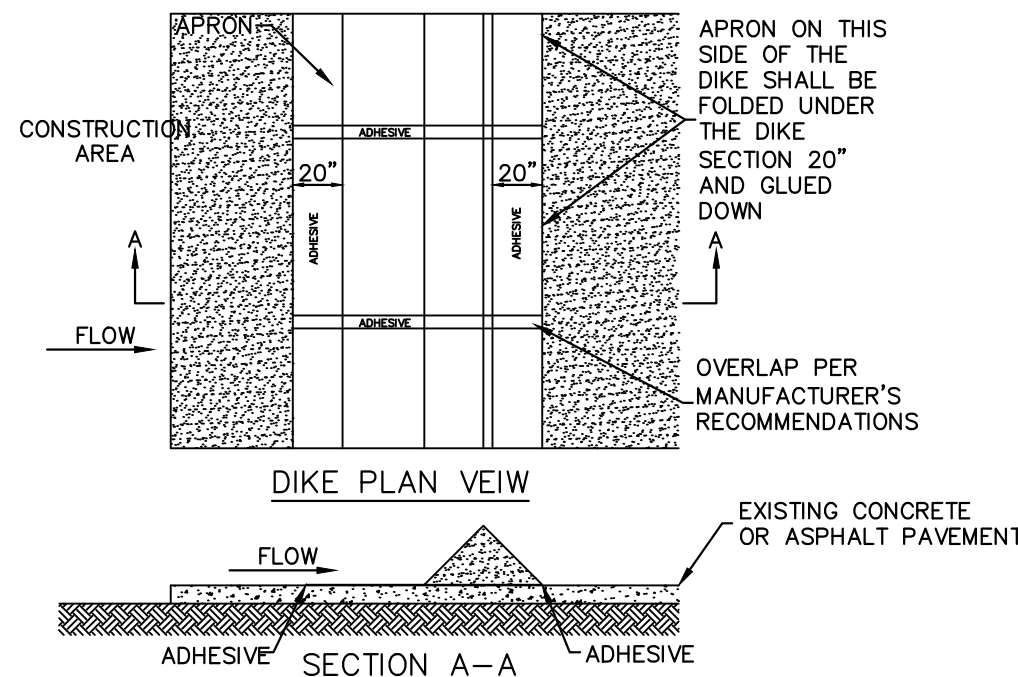
NOTE:

- INSPECT AND REPAIR FENCE EVERY 7 DAYS AND AFTER EACH STORM EVENT AND REMOVE SEDIMENT WHEN NECESSARY.
- REMOVED SEDIMENT SHALL BE DEPOSITED TO AN AREA THAT WILL NOT CONTRIBUTE SEDIMENT OFF-SITE AND CAN BE PERMANENTLY STABILIZED.
- SILT FENCE SHALL BE PLACED ON SLOPE CONTOURS TO MAXIMIZE PONDING EFFICIENCY.
- DOUBLE ROW SILT FENCE SHALL BE INSTALLED WITH 3' HORIZONTAL SPACING.

STAKED SILT FENCE
NOT TO SCALE

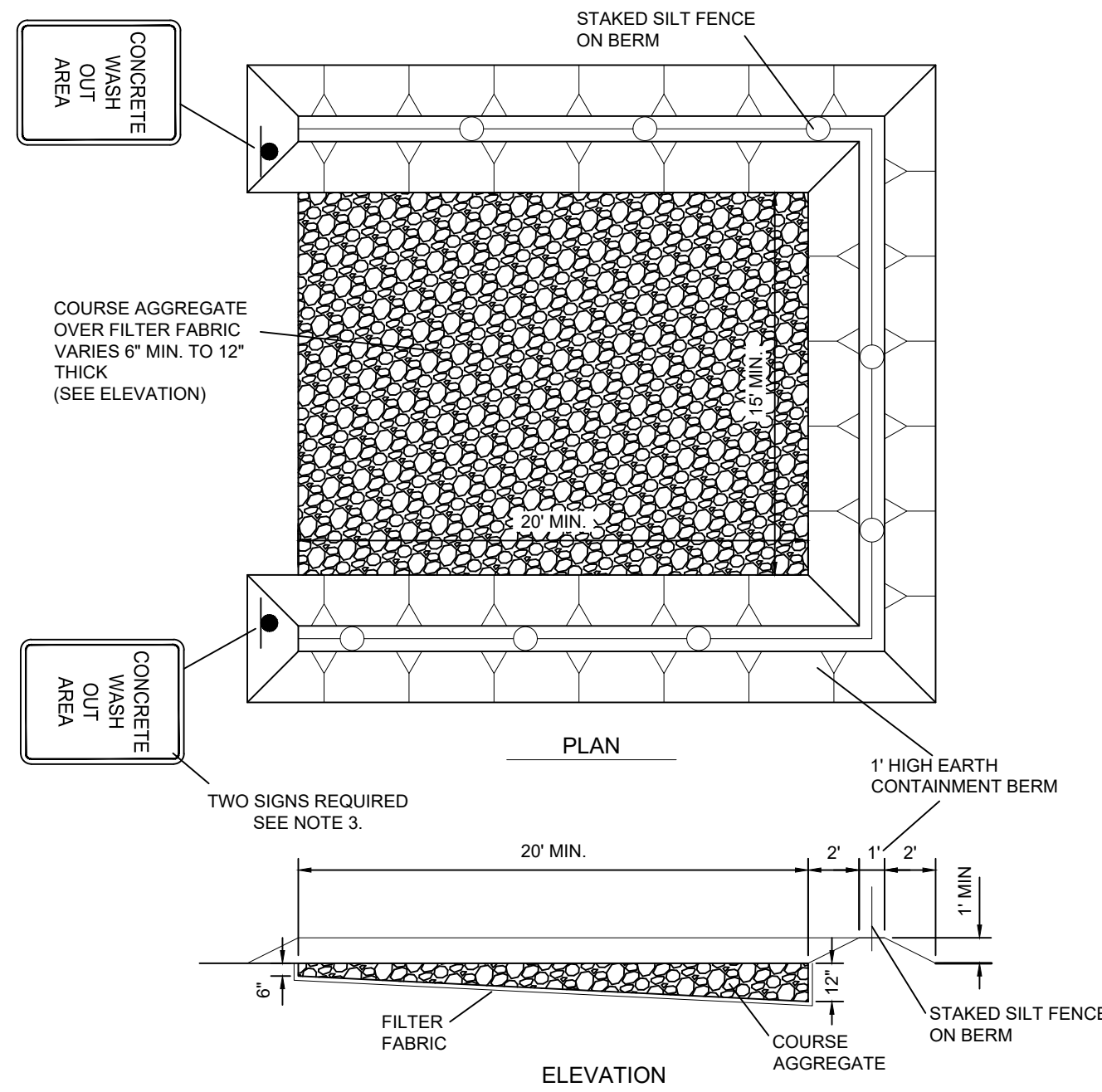
K-H

- NOTES:
- INSTALLED SILT DIKE UNIT SHALL HAVE CONTINUOUS AND FIRM CONTACT WITH PAVEMENT.
 - ADHESIVES SHALL BE LIQUID NAIL OR APPROVED EQUAL FOR CONCRETE PAVEMENT APPLICATIONS AND EMULSIFIED ASPHALT FOR ASPHALT APPLICATIONS. ADHESIVE SHALL BE PLACED WHERE THE UNITS OVERLAP AND A 20" STRIP ALONG BOTH EDGES.



SILT DIKE ON EXISTING PAVEMENT
NOT TO SCALE

K-H



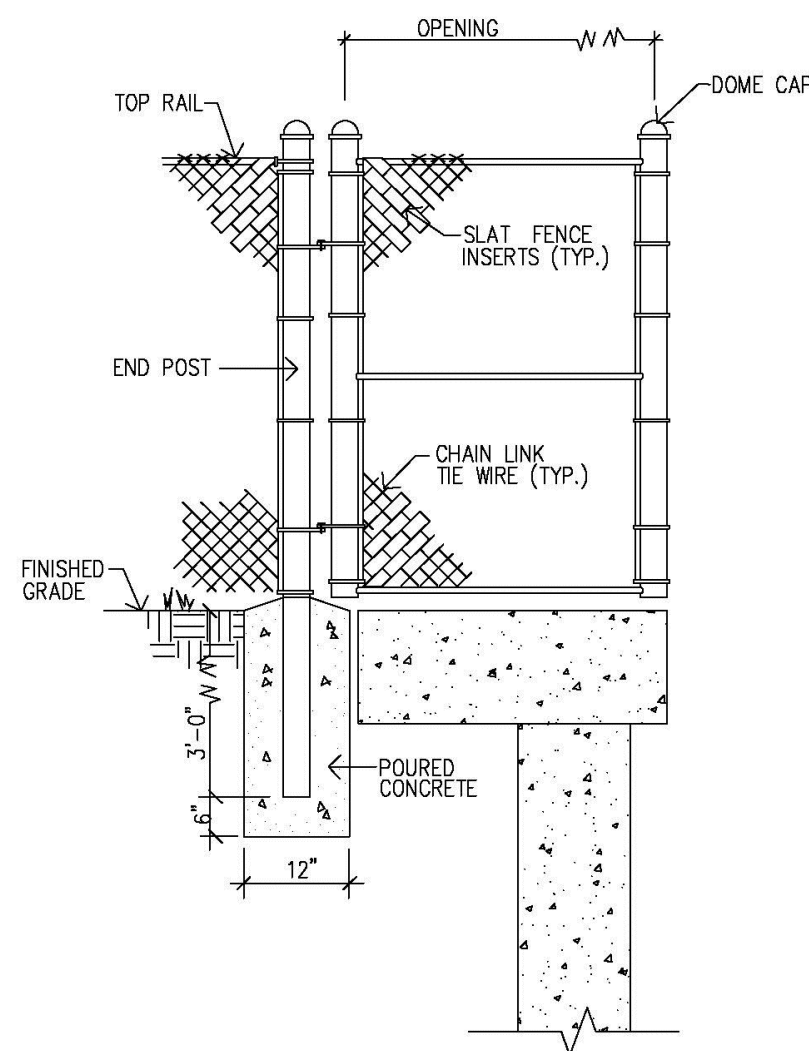
NOTES:

- ALL MATERIAL SHALL BE REMOVED FROM THE SITE AT THE END OF THE PROJECT.
- AGGREGATE SHALL BE REPLACED AS DIRECTED BY THE ENGINEER OF RECORD AND/OR THE CITY WHEN EXCESSIVE MATERIALS BUILDUP RENDERS THE WASH OUT AREA NO LONGER FUNCTIONAL.
- SIGNS SHALL BE 18" X 12" MIN. SIZE WITH 2" BLACK LETTERING ON A WHITE BACKGROUND AND MOUNTED A MINIMUM OF 7 FEET ABOVE GRADE FROM THE LOWEST EDGE OF THE SIGN FACE.

CONCRETE TRUCK WASH OUT AREA
NOT TO SCALE

K-H

KIMLEY-HORN & ASSOCIATES, INC. DETAIL



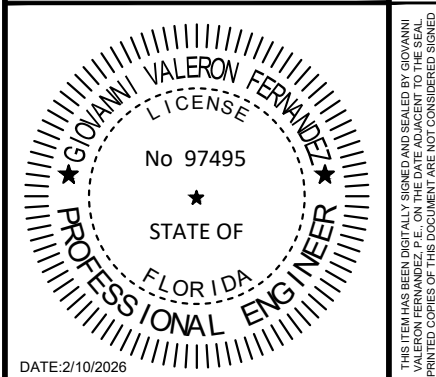
NOTE:
ALL FENCE POST INSTALATIONS MUST MEET ALL FLORIDA BUILDING CODES

ENGINEERING STANDARDS 2025

REVISIONS		ENGINEERING DIVISION		CHAIN LINK FENCE	
BY	DATE	CITY OF POMPAÑO BEACH		DATE: MAY 2022	
		SCALE: N.T.S.		DWG. NO. 303-4	

Kimley»Horn

© 2025 KIMLEY-HORN AND ASSOCIATES, INC.
8201 PETERS ROAD, SUITE 2200, PLANTATION, FL 33324
PHONE: 954-555-5100 FAX: 954-739-2247
WWW.KIMLEY-HORN.COM REGISTRY NO. 35106



KHA PROJECT	043175014	SCALE	AS SHOWN	DESIGNED BY	GVF	EA	GVF
DATE	12/1/2025	DRAWN BY		CHECKED BY			

DEMOLITION & EROSION CONTROL DETAILS

MODERA POMPAÑO BEACH
PREPARED FOR
MCRT INVESTMENTS LLC
POMPAÑO BEACH, FLORIDA

SHEET NUMBER
C-101

DRC
PZ2512000028
03/18/2026